

To book onto any course or project please contact RE Matters

See below for contact details

Payment and Cancellation Procedure

Once a course/project has been booked with RE Matters a confirmation e-mail will be sent to the school. An invoice will be sent to the school after the work/course has been completed.

In the case of cancellation the following charges will be applied:

24 hours or less notice of cancellation = full cost of course
25-72 hours notice of cancellation = 60% of full course fee

Working with cluster groups

RE Matters is very happy to explore working with schools collectively in an area to deliver bespoke support for Religious Education and Collective Worship, as well as NQT training.

Please do get in touch if you are interested in this.



R.E. Matters

Inspiring and transforming education

Claire Clinton BA Hons, PGCE Cantab
Education Advisor

Park Primary School
Matthew Park Avenue
Stratford. E15 4AE

Tel: 020 8534 4065

Mobile: 07950 701933

E-Mail: claire.clinton@rematters.co.uk

Web: <http://www.rematters.co.uk>

RE Matters is a not-for-profit business seeking to support education in East London

16



R.E. Matters

Inspiring and transforming religious education

2011-12 Brochure

Supporting primary schools

Exciting opportunities for
continuing professional development for:

RE co-ordinators, Senior Leadership Teams,
Collective Worship Managers, NQTs, GTPs,
TAs and HLTAs, Pupils and Students

R.E.. Matters is a not-for-profit business



Claire Clinton

Welcome to the first edition of our CPD brochure

You will find that it incorporates established and new courses as well as programmes that will run throughout 2011-2012

Quality assurance all our programmes operate within a quality assurance framework as set out by The RE Council for England and Wales


Course venues will be accessible and of a high quality or school based

Course Support A full set of course notes and digital support will be available to all participants

Claire Clinton
Education Advisor

Disclaimer: The courses in this brochure are continually updated and amended, and although courses will not be significantly altered, the details enclosed in this brochure may be subject to change.

2



Coaching and Mentoring


Schools currently face many challenges: reshaping the workforce, succession planning, personalisation, standards, accountability and school improvement being just a few. Coaching and mentoring, and its development, can help school leaders effectively tackle these issues. Trained by the National College of leadership for schools, Claire Clinton offers this tool and advise to schools.

Philosophy for Children (P4C)

Trained and accredited by Sapere, Claire Clinton offers support to schools wishing to train whole schools in P4C, and to middle leaders in strategies in organising the implementation of P4C in their school.

Working with local faith communities

Through the work that Claire has done within the Borough of Newham over the last five years, she has built a distinctive and specialist knowledge of the diversity within and between faiths and secular world views in the East End of London. This expertise can be useful to schools in a number of ways and RE Matters seeks to support schools as they walk a journey with pupils, families and local communities.



15

Infant RE Matters



Developing on from the success of Junior SACRE in previous years we are offering schools a younger version of Junior RE Matters. Infant RE Matters seeks to:

Promote dialogue and understanding between children of differing faiths and secular backgrounds and cultures, supporting collaborative work.

Infant RE Matters exists to give Newham children a place where they can explore spirituality. Every school has the opportunity to four to six pupil representatives from Year 2 and a member of staff to an Infant RE Matters 1 day conference.

2011-2012 Conference

In 2011-12 our theme will be **'Belonging'**, we will be using Philosophy for children (P4C) to engage pupils with this theme. The children will go on to learn what different religions as well as secular world views think about what belongs to them and how they belong. It will give the children opportunities to express their thinking creatively through the use of the arts

Dates for one day conferences 2011-2012

Monday 23rd April 2012

Tuesday 1st May 2012

Choose one date and then book on

Cost: £125 (package A or B schools)
£200 (non-package cost)

14

Contents

Courses	Page
Advisory Prices	4
Primary RE Network Meeting	5
Implementing the Newham 2011 Agreed Syllabus	6
Visit a Place of Worship Month (POW)	8
NQT RE Training	8
Tour of Places of Worship	9
Preparing for Ofsted	9
New to Leading RE	10
RE and the Arts	10
Inspiring Collective Worship	11
Thinking Skills and RE	11
Junior RE Matters	12
Infant RE Matters	14
Coaching and Mentoring	15
Philosophy for Children	15
Working with Local Faith Communities	15
Booking and Cancellation Procedures	16
Working with Cluster Groups	16

3

Advisory Prices

Package A

3 x twilight RE network
Visit a Place of Worship (POW) membership and database

Package B

3 x twilight RE network
Visit a Place of Worship (POW) membership and database
Unlimited e-mail and phone advisory support

Advisory Packages are a very cost efficient way to purchase support

	One form entry school	Two form entry school	Three form+ entry school
Package A	£200 p.a.	£250 p.a.	£300p.a.
Package B	£300 p.a.	£350p.a.	£400p.a.
Package A & B additional advisory services costs	RE/ACW courses = £125 per person per course; whole school twilight session £150 ½ day of advisors time £125 1 day of adviser time £250 Junior SACRE project attendance for staff and pupils £125 Infant SACRE project attendance for staff and pupils £125		
Services prices outside packages A & B costs	3 twilight RE network sessions a year £300 Visit a place of worship membership & database £100 Primary RE or ACW course £200 Junior SACRE project attendance for staff and pupils £200 Infant SACRE project attendance for staff and pupils £200 half days of advisors time £250 1 day of advisors time £500 School twilight session £200		

4

2011-2012 Conference

In 2011-12 our theme will be **'Belonging'**, we will be using Philosophy for children (P4C) to engage pupils with this theme. The children will go on to learn what different religions as well as secular world views think about what belongs to them and how they belong. It will give the children opportunities to express their thinking creatively through the use of the arts.



RE Matters will co-ordinate the conference day itself for a cluster of schools. Schools already working in clusters can purchase this package collectively or RE Matters will place schools together in informal clusters. The host school for the 1 day conference would provide a venue large enough for 40 pupils and 8 members of staff to be for the day, in lieu of the conference day cost.

Dates for potential 1 day conferences 2011-2012

Tuesday 22nd November 2011

Monday 9th January 2012

Wednesday 18th January 2012

Thursday 26th January 2012

Monday 6th February 2012

Tuesday 21st February 2012

Wednesday 29th February 2012

Thursday 29th March 2012

Choose one date and then book on

Cost: £125 (package A or B schools)
£200 (non-package cost)

Comments from teachers

"The pupils were completely involved, their responses often superb. I look forward to being a part of this again next year."
"This was an extremely well planned, well managed project, which I have so enjoyed being a part of."

13

Junior RE Matters

Formerly Junior SACRE



Junior RE Matters seeks to:

Promote dialogue between young people of differing faiths and secular backgrounds and cultures, supporting collaborative work.

Contribute to community benefit, as it has been developed from real children's concerns and interests. It seeks to address these concerns as well as empower them in solving problems and creating advice for schools.

Junior RE Matters gives Newham children a place where they can discuss spiritual and moral issues that are important to them. Every school has the opportunity to elect or send four to six pupil representatives from Year 5 and a member of staff to a Junior RE Matters one day conference. The hope is that these children will be representatives of the different religious and secular world views.

Junior RE Matters provides a place for serious discussion and debate across schools. It gives schools a way of capturing children's thoughts and suggestions on important moral, religious and spiritual issues, and provides a 'gifted and talented' opportunity in RE at Key Stage 2.

Junior RE Matters will elect a chair and vice chair who represent the group at adult SACRE meetings where appropriate.

12

RE Network meetings

Religious Education network meetings are run to give an opportunity to RE co-ordinators within primary schools to meet, network and work collaboratively on projects and middle manager responsibilities.

Network meetings will: update co-ordinators on local and national information; help co-ordinators understand their role and responsibilities within school; share best practice models and examples in RE; work with outside agencies and faith groups to support schools in delivering high quality RE.

Dates for meetings in 2011-2012

Thursday 20th October 2011 4-6pm

Venue: Park Primary School,
Matthew Park Avenue. Stratford. E15 4AE

Thursday 9th February 2012 4-6pm

Venue: Park Primary School,
Matthew Park Avenue. Stratford. E15 4AE

Thursday 14th June 2012 4-6pm

Venue: Park Primary School,
Matthew Park Avenue. Stratford. E15 4AE

Cost: Free to package A & B schools;
£300 p.a. for non-package schools

Comments from teachers

"Network meetings are brilliant and very informative."
"Network meetings are extremely useful to me in my role, as I get to share ideas as well as meeting with an advisor who is informative and motivated."

5

FULL DAY COURSE

Implementing the Newham 2011 New Agreed Syllabus

Learning about religion day 1



This one day course supports schools and RE co-ordinators in implementing changes in the New Agreed Syllabus through visiting three places of worship and learning more about Christianity, Judaism, Atheism and Hinduism as taught about in the RE syllabus.

Date: **Monday 7th November 2011**

Time: Meet 8:45am at Highway, course will finish at 4pm
Venue: Highway Church, Romford Road, Stratford E15 4EH
Refreshments and lunch provided
Cost: £125 (package A or B schools)
£200 (non-package cost)

Learning about religion day 2



This one day course supports schools and RE co-ordinators in implementing the changes in the New Agreed Syllabus through visiting three places of worship and learning more about Buddhism, Islam and Sikhism as taught about in the new RE syllabus.

Date: **Monday 30th January 2012**

Time: Meet 8:45am at Highway, course will finish at 4pm
Venue: Highway Church, Romford Road, Stratford E15 4EH
Refreshments and lunch provided
Cost: £125 (package A or B schools)
£200 (non-package cost)

Comments from teachers

"I have learnt so much today my head hurts, but I have really enjoyed visiting places of worship. I would give it 10 out of 10."
"I now feel more confident teaching about different religions and taking children out to visit places of worship."

6

Inspiring Collective worship

This one day course seeks to support those with school responsibilities for organising and leading Acts of Collective Worship (ACW). The day is practical giving staff a chance to experience a number of different forms of ACW as well as giving time for reflection and planning. The legal requirements for ACW, school policy documents and a wealth of resources are also shared.

Date: **Monday 19th March 2012**

Time: **9am to 4pm**
Venue: Highway Church, Romford Road, Stratford E15 4EH
Refreshments and lunch included
Cost: £125 (package A or B schools)
£200 (non-package cost)

Comments from teachers

"An inspiring day."
"I now feel confident to start to lead in my new role, and develop Collective Worship in my school."

Thinking skills and RE

Developing pupils cognitive and philosophical thinking skills is important to see development in their progress in all subjects. This CPD session builds upon a variety of creative thinking skill models teachers can use to develop pupils progress in RE. The session does carry a slight health warning that teachers brains may hurt by the end of the session!

Cost: Twilight £125 (package A or B schools)
£200 (non-package cost)

11

New to leading RE

This twilight seeks to give staff who are new to being the RE co-ordinator an introduction to this role.

Date: **Thursday 4th October 2011**

Time: **4-6pm**

Venue: **Park Primary School,**

Matthew Park Avenue, Stratford, E15 4AE

Cost: £50 (package A or B schools)

£75 (non-package cost)

RE and the arts

RE Matters offers a number of staff CPD sessions bringing RE and the arts (music, art and drama) together. Schools can focus on RE and one other discipline or a mixture of all three for a truly inspirational session. The sessions can work as a twilight session or as a longer session. Each session shows how the creative curriculum can be planned for through bringing subjects together, and shows links to the new RE Agreed Syllabus.

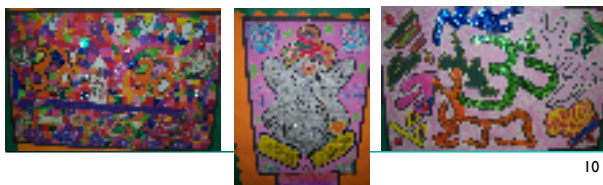
Dramatic RE

Musical RE

Spirited art

Cost: Twilight £125 (package A or B schools)

£200 (non-package cost)



10

Implementing the Newham 2011 New Agreed Syllabus

As schools seek to implement the new syllabus here are some ideas for a twilight that can be run at your school.

Twilight session 1: Cracking RE

This twilight will take staff through the changes in the New Agreed Syllabus document, and will give input for the 3 new religions and philosophies that will need to be taught in RE. It will allow staff time to plan for the year ahead and highlight resources needed. Throughout the session there will be practical, usable resources to add creativity into your staff's RE teaching.

Twilight session 2: Meeting Faith

This twilight will give staff the opportunity to meet with local faith leaders and talk with them about their beliefs and practices. Schools can choose to focus on the 3 new religions and philosophies required to be taught in the New Agreed Syllabus or on a selection of faiths that would best meet the needs of your staff.

Twilight session 3: EYFS Creative RE

This twilight focuses on the EYFS and seeks to equip all those who work in nurseries, children centres and reception classes to understand the creative potential of RE for 3-5 year olds and the support available through the new agreed syllabus

Cost: £150 (package A or B schools)

£200 (non-package cost)

Comments from schools

"Claire delivered exactly what we needed as a staff in an engaging and creative way,"

"An informative and inspirational session."

7

Visit a place of Worship

March 2012 will be Newham's Visit a place of Worship month. A month when RE Matters seeks to encourage RE learning outside the classroom.

Buying this element from our package ensures that your RE co-ordinator will receive:

- support in planning and organising this month in your school;
- receive a database of over 60 local and London places of worship who are happy to receive visits from Newham schools; and
- entry into the Place of Worship competition.

The database will give clear addresses, contact name, e-mail and phone details for Places of worship. It will also show which places of worship have attended faith leaders training on leading a school visit. Schools will receive this database at the end of Dec 2011.

Cost: Free to package A & B schools otherwise £100 p.a.

NQT training

We offer a half days training for NQT's on teaching Religious Education in Newham. This input covers:

- Using the new Agreed Syllabus
- The religious and cultural make up of Newham
- Where to go to get questions answers
- Resources to use in RE lessons
- Being creative and thoughtful in teaching RE
- Handling sensitive questions and difficult subjects

Date: **Monday 28th November 2011**

A.M session 9-12pm; P.M. session 1-4pm

Venue: Highway Church, Romford Road, Stratford E15 4EH

Cost: £75 (package A & B schools); £100 (non-package cost)

8

Tour of places of worship

This one day course provides staff, NQTs GTPs and HLTAs with the experience of visiting 6 different places of worship in Newham with the advisor. It acts as a days master class in religion.

Date: **Monday 2nd July 2012**

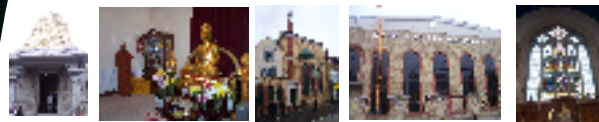
Time: Meet 8:45am at Highway, course will finish at 4pm

Venue: Highway Church, Romford Road, Stratford E15 4EH

Refreshments and lunch provided

Cost: £125 (package A or B schools)

£200 (non-package cost)



Preparing for full Ofsted & 1 day subject inspections

RE Matters offers a number of services that can help support your school prepare for an Ofsted Inspection such as:

- Middle leader interview preparation
- Ofsted documentation check
- Understanding progression in RE
- Book moderation check
- Support to middle leaders in running a lesson observation
- Capturing best practice examples

Cost: £125 for 1.5-3hours of advisor time; £250 for 3-6 hours of advisor time (package A or B schools)

£250 for 1.5-3hours of advisor time; £500 for 3-6 hours of advisor time (non-package cost)

9